

**SAN MARTIN KALEAN TOPOAREN
LANEK ERAGINDAKO ERAGOZPENAK
GUTXITZEKO AURREIKUSITAKO
NEURRIEN LABURPENA**

2019ko azaroak 11








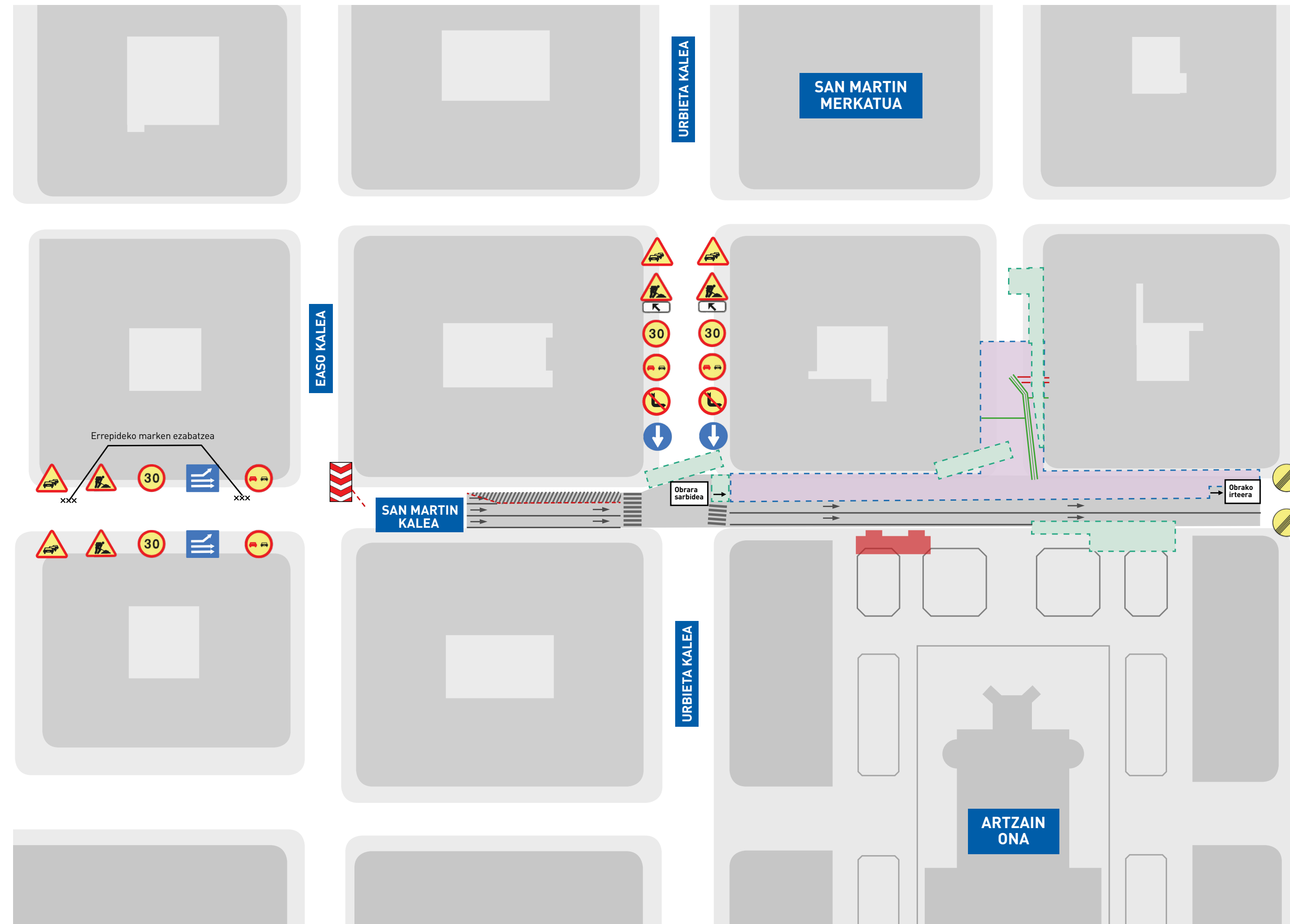
**DONOSTIA
SAN SEBASTIÁN**



I. FASEA: 2020KO OTSAILAREN 1ERA ARTE SAN MARTIN KALEKO LEHEN ERRAILAREN MOZKETA



-  Okupazio iraunkorra
-  Aldi baterako okupazioa
-  Obrara sarbidea
-  Galbanizazio itxiera 3x2ko
-  Plastikozko new jersey-a








II. FASEA: 2020KO OTSAILAREN 1 ETIK UZTAILAREN 15 ERA ARTE SAN MARTIN KALEKO BIGARREN ERRAILAREN MOZKETA

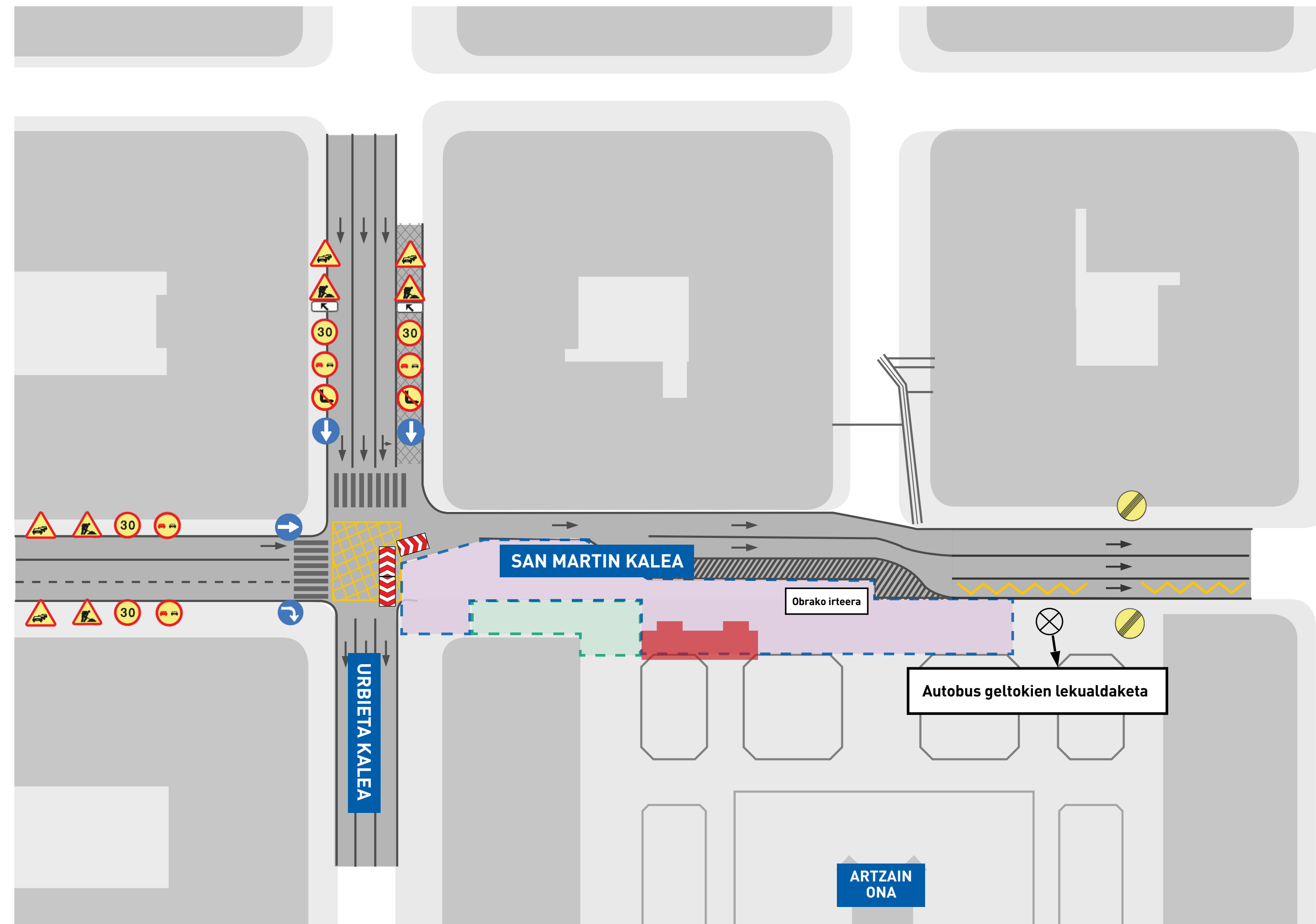


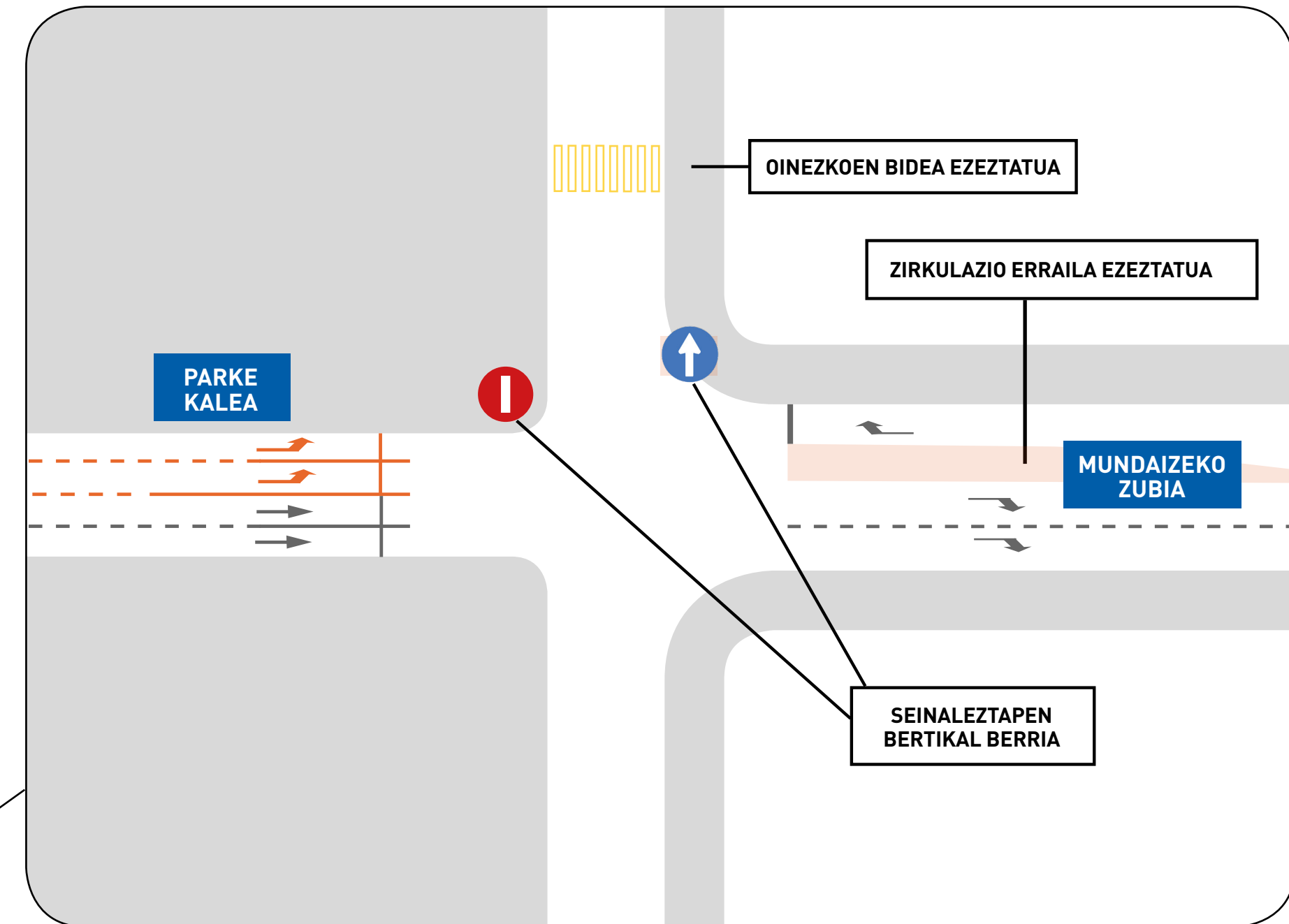
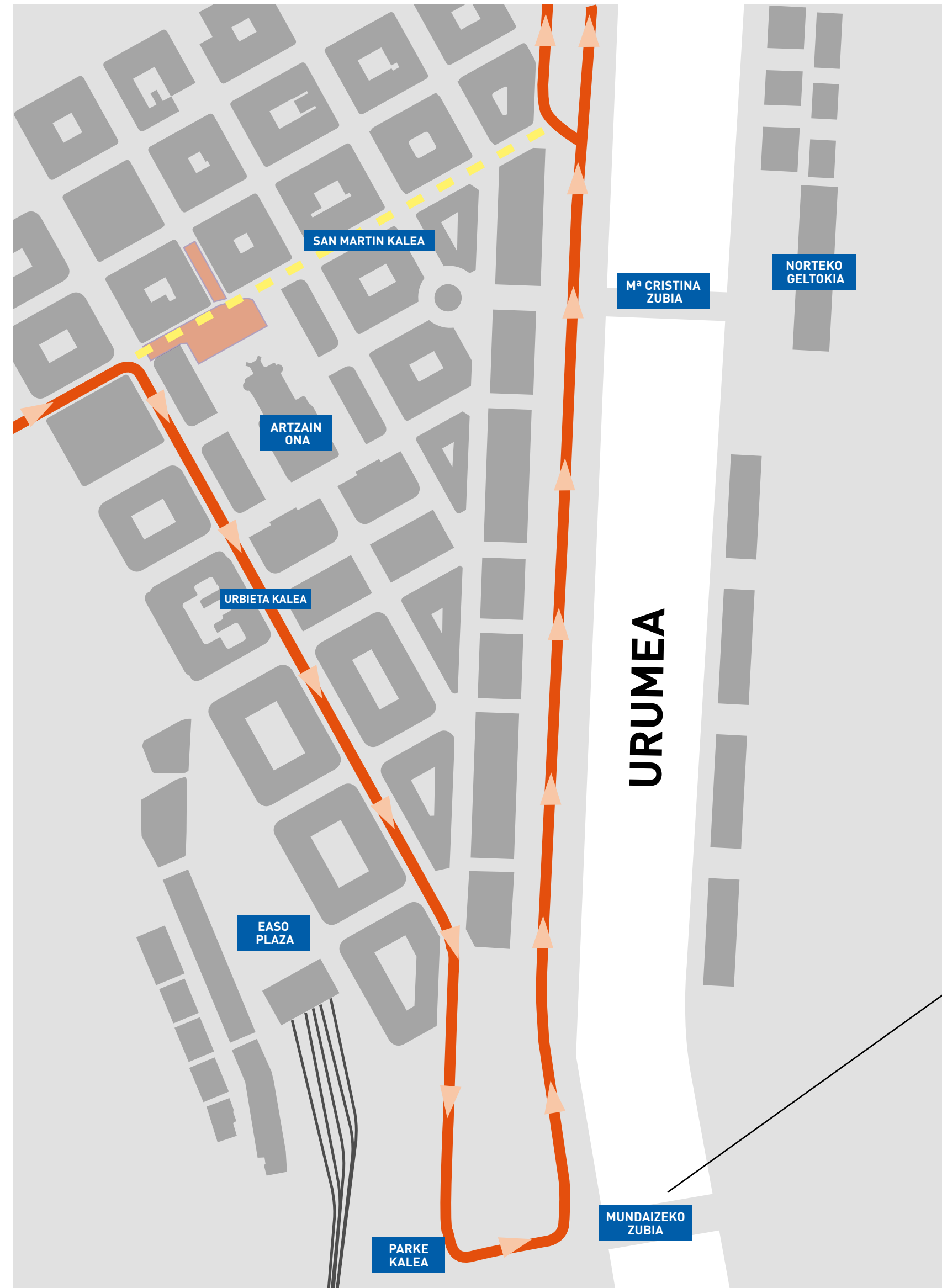
Urbietako kalea / Parke kalea /
Gernikako Arbola Etorbidea.



Geltokiak lekualdatu egingo dira.

-  Okupazio iraunkorra
-  Aldi baterako okupazioa
-  Obrara sarbidea
-  Galbanizazio itxiera 3x2ko
-  Plastikozko new jersey-a





PARKE KALEKO TRAFIKOAREN ALDI BATERAKO ARAUKETA






III. FASEA: 2020KO UZTAILAREN 15ETIK AURRERA SAN MARTIN KALEKO ERABATEKO MOZKETA

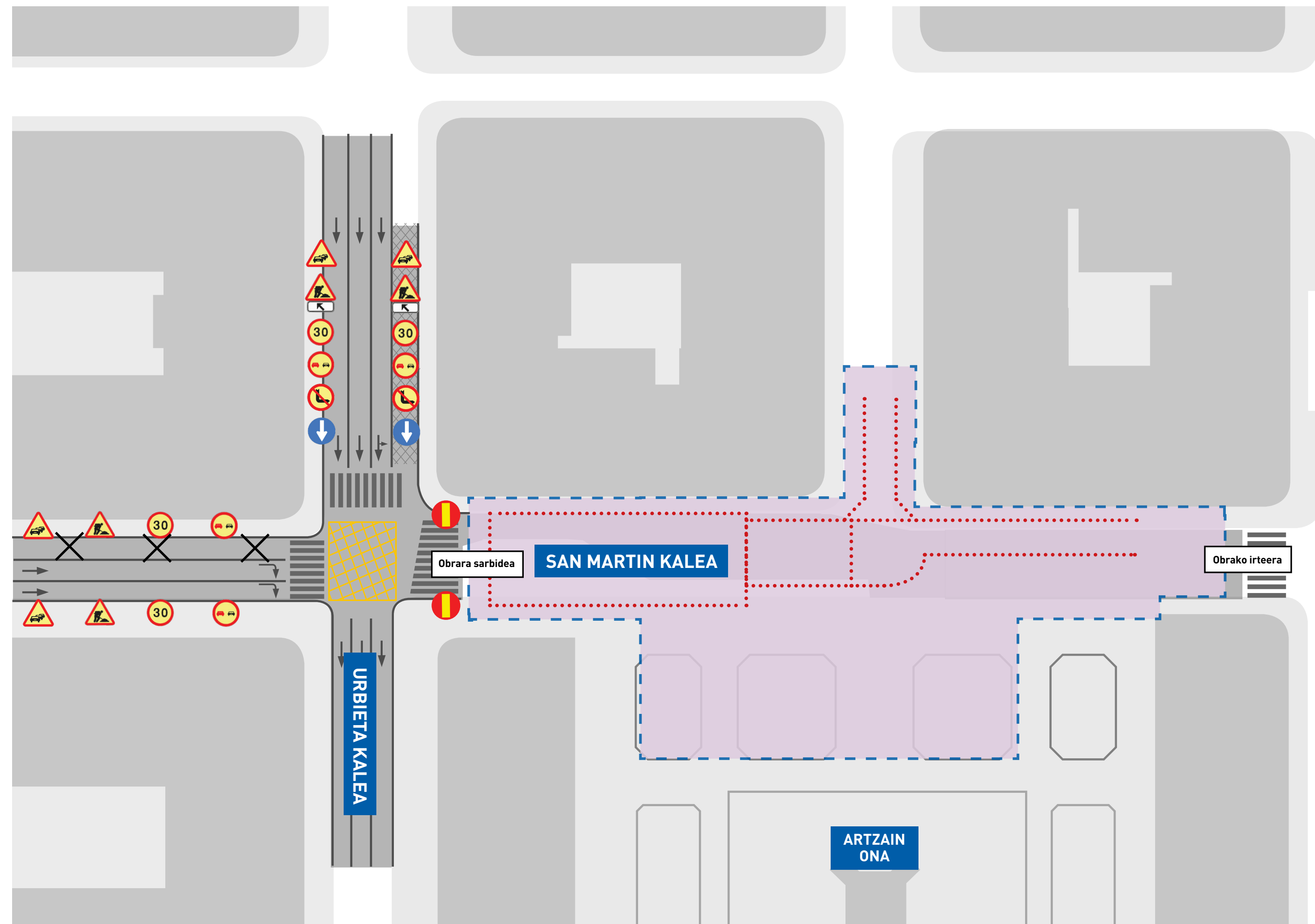


Urbietza kalea / Parke kalea /
Gernikako Arbola Etorbidea.



Ordezko ibilbidea: Easo kalea /
Askatasunaren Etorbidea.

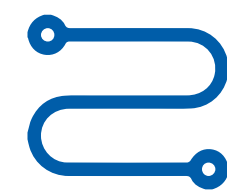
-  Okupazio iraunkorra
-  Aldi baterako okupazioa
-  Obrara sarbidea
-  Galbanizazio itxiera 3x2ko
-  Plastikozko new jersey-a







Biala: Mendebaldetik (Antigua) hirigunera joateko



Saihesbidea: Hiriko hainbat auzoen arteko lotura gisa



Kanpoaldeko parkingak: Bentaberri, Pio XII, Arcco, autobus geltokia...



DONOSTIA
SAN SEBASTIÁN